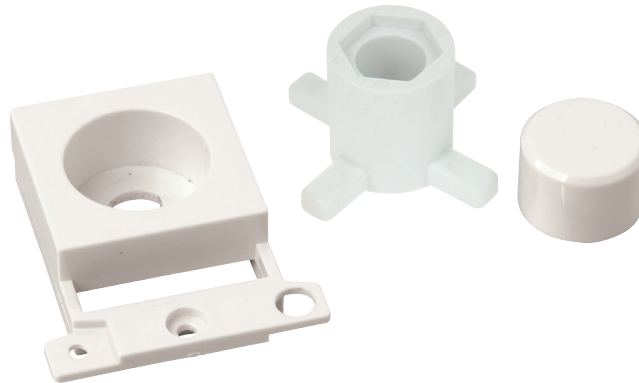


Product Code: MD150PW

Description: Dimmer Module Mounting Kit



General Information

Dimensions (mm)	41 (W) x 52.5 (H) x 13.2 (D)	
Finish	Polar White	
Materials	Frame: Nylon	Control Button: Urea
Modular Rocker Switches	Yes	
Minimum Back Box Depth (mm)	47	
Operational Temperature (°C)	-5 to +40	
Warranty (Years)	10	

Additional Information For cleaning / polishing of products, use only a soft, dry, clean cloth. Ensure that the mains supply is isolated before commencing installation and refer to the circuit diagram with the relevant product. Bare earth cables must always be covered with appropriate sleeving and wired to the earth terminal.

Suitable and matches the Definity, Mode, Polar & Part M ranges

Compatible Dimmer Modules	MD9014: 100W Dual Mode LED Dimmer Module
	MD9001: 6A Push ON/OFF (Dummy Dimmer / Non Dimmable) Module
	MD9010: 1-10V Analogue Rotary Dimmer Module
	MD9022: 40-250W Leading Edge Dimmer Module
	MD9042: 60-400W Leading Edge Dimmer Module