



### PRODUCT FEATURES

- Replacement for traditional high bay
- High luminous efficacy with up to 135lm/W
- Easy installation with single point hook mounting design
- IP65 protection
- High vandal resistant with IK08
- Wide beam angle 110° provide uniform illumination
- Modular plug and play microwave sensor, with standby dimming (configuring by optional remote controller)
- Durable die-cast aluminium with anti-corrosion powder coating
- High surge protection level: 4000V (L-N) ; 6000V (L,N-PE)
- Fixing bracket adjustable up to 180°
- Stainless steel 304 screws equipped
- Equipped with 100cm length H05RN-F 3\*1.0mm<sup>2</sup> power cable

### Motion Sensor

- Modular plug and play microwave sensor for energy saving
- The light automatically switches on/off or dimming when it detects motion
- Adjustable sensitivity, hold time, and standby dimming by optional remote controller. Suitable for various applications

### APPLICATIONS

- High-ceiling area
- Halls
- Warehouses
- Manufacturing bays
- Trade fairs
- Exhibitions
- Retail (Fresh Food, Cashier)



### GENERAL INFORMATION

Input Voltage / Frequency	220-240 VAC / 50-60Hz
Power Factor	> 0.9
Power Supply Unit	Integrated
Surge Protection	4000V (L-N) / 6000V (L,N-PE)
Dimmable	No ; Standby dim (with LA11201 Motion Sensor Module)
CRI	≥ 80
Beam Angle	110°
Colour Consistency	SDCM ≤ 6
Lifetime	50 000hrs L70 B50 at 25°C
Number of Switching Cycles	> 100 000
IP	65
IK	08
Protection Class	I
Glow Wire	650°C
Photobiological Safety Group	RG 1
Flicker	Low flickering
Working Temperature	-30°C to +50°C
Light Source Replaceability	No
Control Gear Replaceability	No
Material & Colour	Die-cast aluminium housing, Polycarbonate
Installation	Suspension, Surface mounting bracket (optional)
Approvals	EN60598-1, EN60598-2-1, EN62493, EN62471, EN60598-2-22, EN55015; EN61547, EN61000-3-2, EN61000-3-3

### PRODUCT INFORMATION

Model No.	MM Code	Power	Luminous Flux	Luminous Efficacy	Color Temp.
		W	lm	lm/W	K
FHB71600v0		100	13500	135	4000
FHB71600v0+LA11201		100	13500	135	4000
FHB71700v0		150	20300	135	4000
FHB71700v0+LA11201		150	20300	135	4000
FHB71800v0		200	27000	135	4000
FHB71800v0+LA11201		200	27000	135	4000



FHB71600v0



FHB71700v0



FHB71800v0

KEO 100W

KEO 150W

KEO 200W

### ACCESSORIES

Model No.	MM Code	Description
LA11201	TBA	Microwave Motion Sensor Module r
LA3168	TBA	Surface mount bracket for 100W (FHB71600v0)
LA3169	TBA	Surface mount bracket for 150W (FHB71700v0)
LA3170	TBA	Surface mount bracket for 200W (FHB71800v0)
LA11202	TBA	Remote control



LA11201

Motion sensor module



LA3168

LA3169

LA3170

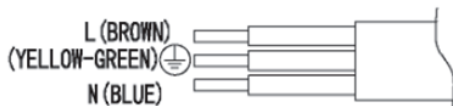
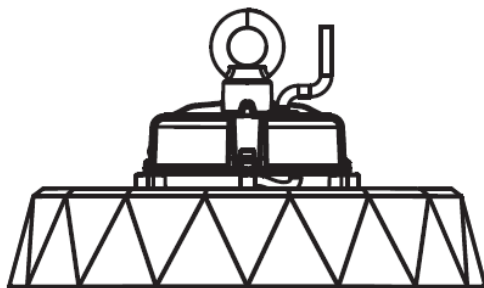
Surface mount bracket



LA11202

Remote controller

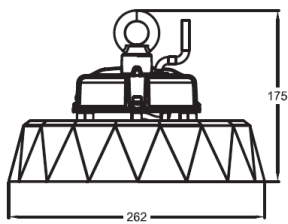
### WIRING DIAGRAM



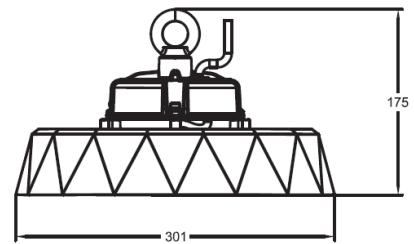
- With 1M length power cable.

### DIMENSIONS & WEIGHT

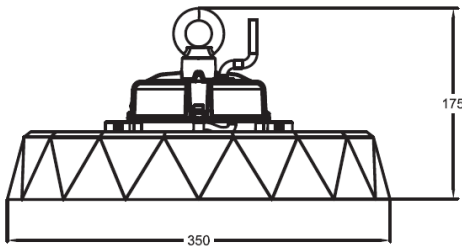
Model No.	Ø mm	H mm	Weight g
FHB71600v0	262	175	TBA
FHB71700v0	301	175	TBA
FHB71800v0	350	175	TBA



FHB71600v0 / FHB71600v0-ms



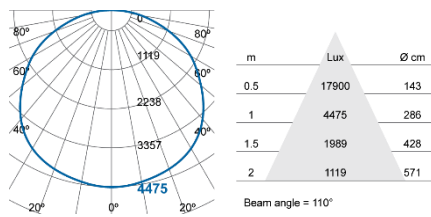
FHB71700v0 / FHB71700v0-ms



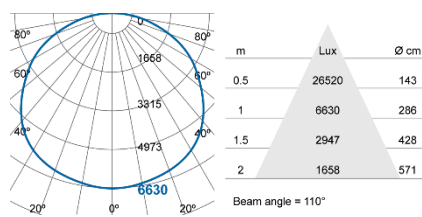
FHB71800v0 / FHB71800v0-ms

### PHOTOMETRIC DIAGRAM

FHB71600v0; FHB71600v0+LA11201



FHB71700v0; FHB71700v0+LA11201



FHB71800v0; FHB71800v0+LA11201

