

JC010016/WH

## Fireguard Next Generation Showerlight

Fireguard Next Generation Mains Twist and Lock Unlamped Showerlight IP65 White



### Features & Benefits

- Slim profile, die-cast aluminium bezels
- Designed specifically for LED lamps
- Ultra fast press fit loop-in/loop-out terminal
- Tested for use in fire-rated ceilings
- IP65 rated (IP20 variant available)
- IP20 Tilt variant available
- Complies with 2014 building regulations: Part B, C and E



NOT SUPPLIED



WARRANTY



CLASS I



RATING

### General Information

Product Group

**Fire-rated downlights**

Product Range

**Fireguard® Next Generation**

Trade Name

**Fireguard®**

Product Shape

**Round**

Mounting

**Recessed**

Product Weight

**0.205kg**

Color Finish

**White**

Overall Dimensions

**108.7 x 87 mm**

Recommended Product Location

**indoor use only**

Minimum Void Requirement

**150mm**

Method Of Fix

**Spring clips**

Product Aperture Size

**74mm**

IP Rating

**IP65**

Environment

**Indoor**

Suitable For Zones

**Zone 1**

Lamp Supplied

**No**

Diffuser / Shade Dimensions (mm)	<b>87</b>
Distance From Lighted Object	<b>0.3m</b>
Duration of Fire protection ( Mins)	<b>Tested for use in fire-rated ceilings. Full information and up-to-date fire testing certificates for ceiling system types are available on JCC.CO.UK</b>
Origin of manufacturer	<b>Made in China</b>
Warranty	<b>2 year standard warranty (See Website for terms and conditions)</b>
Lighting Product Type 1	<b>Fired Rated Downlights</b>

## Electrical

Voltage Rating	<b>220-240</b>
Operating Frequency Hz	<b>50/60Hz</b>
Luminaire Circuit Wattage	<b>7W LED Max</b>
Class	<b>Class I, earth required</b>
Input Electrical Connections	<b>Live(Brown)Neutral(blue)Earth(yellow/green) - Loop in/Loop out press fit terminal</b>
Dimmable	<b>Check with lamp manufacturer</b>
Lampholder	<b>GU10 cap</b>

## Thermals

Room Ambient Temperature	<b>25°C</b>
Insulation Coverage	<b>see instruction sheet</b>
Minimum Void Requirement	<b>150mm</b>

## Performance Data

Energy Rating	<b>This product can contain a suitable light source of energy efficiency class from A to G</b>
---------------	--

## Construction

Rim Or Attachment	<b>Die-cast aluminium</b>
-------------------	---------------------------

## Packaging

Product Packaged Weight	<b>0.236kg</b>
Quantity Per Outer Carton	<b>20</b>
Outer carton(L)- cm	<b>47</b>
Outer carton(W)- cm	<b>21.5</b>
Outer carton(H)- cm	<b>22.5</b>
Outer carton overall dimensions	<b>47 x 21.5 x 22.5cm</b>
Outer carton Net weight- kg	<b>4.72kg</b>
Outer carton Gross weight- kg	<b>5.52kg</b>

Product Bar Code EAN-13 Number

5052544105821

Outer carton Bar Code ITF-14 Number

15052544105828

## Standards & Approvals

Manufactured In Accordance To

**BS EN 60598-2-1, 2-2**

CE Marked

**Yes**

UKCA Marked

**Yes**

Date code/Purchase order No.

**Yes**

WEEE Symbol

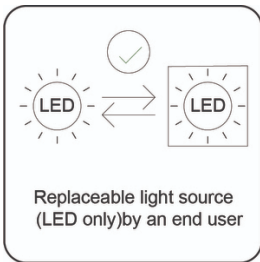
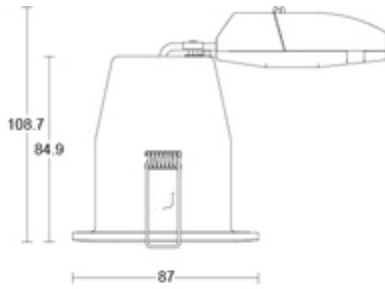
**yes**

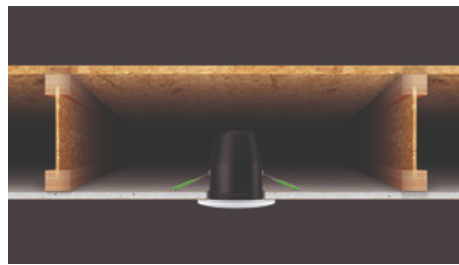
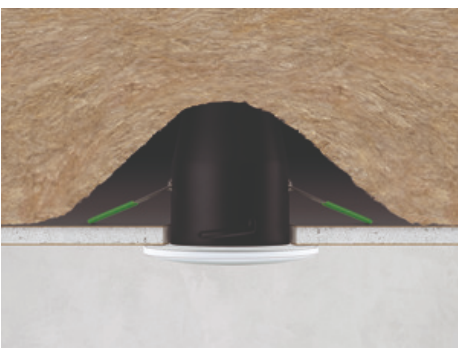
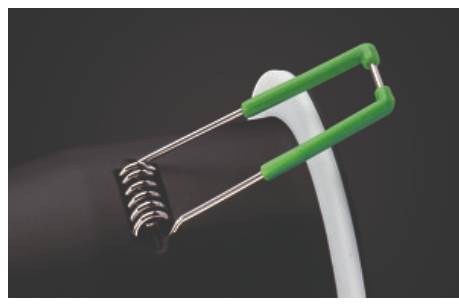
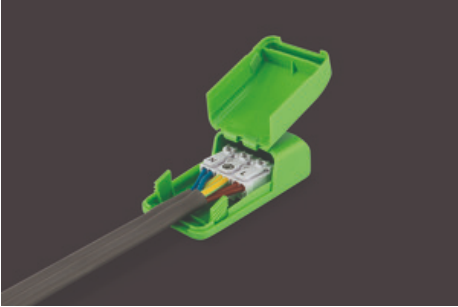
Certificate Of Conformity

**Available on request**

Accredited Members

**LIA, ISO9001:2015, ISO14001:2015**





---

JCC Lighting LTD Innovation Centre, Beeding Close, Southern Cross Trading Estate, Bognor Regis, West Sussex PO22 9TS  
Sales: 01243 838999 (8am to 5pm Monday to Friday) Fax: 01243 838998 | [sales@jcc.co.uk](mailto:sales@jcc.co.uk) | [www.jcc.co.uk](http://www.jcc.co.uk)  
Company Registration Number: 03044848 | VAT Number: 918544112

This document is uncontrolled if printed, all information is subject to change

Version 67 [23 Apr 2021]