



# UltraEfficient LED bulb

## MAS LEDBulbND4-60W E27 840 A60 CL G EELA

This is the most efficient LED bulb from Signify. 210lm/W helps to concrete the company statement of sustainability. 50000 hour lifetime helps to extend the replacement cycle to reduce the waste. This is not only the high SPEC product, but also keep the light quality of Philips brand

### Product data

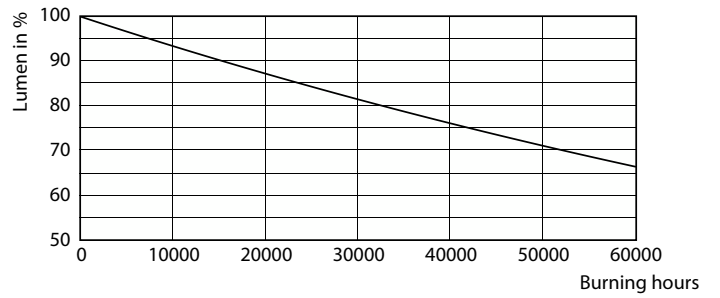
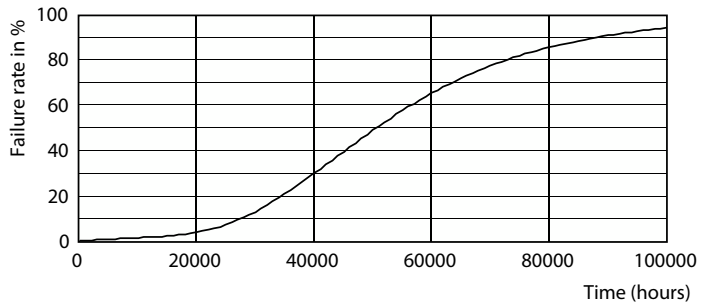
General information	
Cap-Base	E27 [ E27]
EU RoHS compliant	Yes
Nominal Lifetime (Nom)	50000 h
Switching Cycle	50000X
Flux measurement reference	Sphere
Light technical	
Color Code	840 [ CCT of 4000K]
Luminous Flux (Nom)	840 lm
Color Designation	Cool White (CW)
Correlated Color Temperature (Nom)	4000 K
Luminous Efficacy (rated) (Nom)	210.00 lm/W
Color Consistency	<6
Color Rendering Index (Nom)	80
LLMF At End Of Nominal Lifetime (Nom)	70 %
Operating and electrical	
Input Frequency	50 to 60 Hz
Power (Nom)	4 W

Lamp Current (Nom)	45 mA
Wattage Equivalent	60 W
Starting Time (Nom)	0.5 s
Warm Up Time to 60% Light (Nom)	0.5 s
Power Factor (Nom)	0.4
Voltage (Nom)	220-240 V
Temperature	
T-Case Maximum (Nom)	35 °C
Controls and dimming	
Dimmable	No
Mechanical and housing	
Bulb Finish	Clear
Bulb Shape	A60 [ A 60mm]
Approval and application	
Energy Efficiency Class	A
Energy Consumption kWh/1000 h	4 kWh



# UltraEfficient LED bulb

## Lifetime



50K

50K

