



PRODUCT FEATURES

- Cost effective LED Outdoor Bulkhead solution for mains voltage with good system yield
- Built in microwave sensor option for energy saving operation
- IP65 protection and high vandal resistant with IK08
- Homogenous light output
- Durable anti-UV polycarbonate housing
- Loop through structure
- Compatible with UK besa box



APPLICATIONS

- Car parks
- Warehouses
- Stairwells
- Corridors

GENERAL INFORMATION

Input Voltage / Frequency	220-240 VAC / 50-60Hz
Power Factor	> 0.9 (Standard Version)
Power Supply Unit	Integrated
Dimmable	No
CRI	≥ 80
Beam Angle	120°
Colour Consistency	SDCM ≤ 6
Lifetime	30,000hrs L70 B50 at 25°C
Number of Switching Cycles	> 100 000
IP	65
IK	08
Protection Class	II
Glow Wire	650°C
Photobiological Safety Group	RG 0
Flicker percentage	≤ 3% at 100Hz
Working Temperature	-30°C to +50°C Standard version
Material & Colour	Polycarbonate, WH24 / BK23
Installation	Surface Mounted; Wall Mounted
Approvals	EN60598-1, EN60598-2-1, EN62493, EN62471, EN55015, EN61547, EN61000-3-2, EN61000-3-3

PRODUCT INFORMATION

Model No.	MM Code	Power	Luminous Flux	Luminous Efficacy	Power Factor	Colour
		W	lm	lm / W	(λ)	
FBH71300v0+WH		12	1100 [4000K]	92 [4000K]	> 0.9	White
FBH71300v0+BK		12	1100 [4000K]	92 [4000K]	> 0.9	Black
FBH71300v0-ms+WH		13	1100 [4000K]	85 [4000K]	> 0.9	White
FBH71300v0-ms+BK		13	1100 [4000K]	85 [4000K]	> 0.9	Black
FBH71300v1+WH		14	1300 [4000K]	92 [4000K]	> 0.9	White
FBH71300v1+BK		14	1300 [4000K]	92 [4000K]	> 0.9	Black
FBH71300v1-ms+WH		15	1300 [4000K]	87 [4000K]	> 0.9	White
FBH71300v1-ms+BK		15	1300 [4000K]	87 [4000K]	> 0.9	Black
FBH71400v0+WH		18	1650 [4000K]	92 [4000K]	> 0.9	White
FBH71400v0+BK		18	1650 [4000K]	92 [4000K]	> 0.9	Black
FBH71400v0-ms+WH		19	1650 [4000K]	87 [4000K]	> 0.9	White
FBH71400v0-ms+BK		19	1650 [4000K]	87 [4000K]	> 0.9	Black
FBH71400v1+WH		24	2200 [4000K]	92 [4000K]	> 0.9	White
FBH71400v1+BK		24	2200 [4000K]	92 [4000K]	> 0.9	Black
FBH71400v1-ms+WH		25	2200 [4000K]	88 [4000K]	> 0.9	White

FBH71400v1-ms+BK

25

2200 [4000K]

88 [4000K]

> 0.9

Black



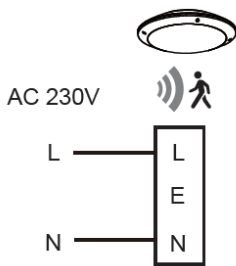
FBH71300v0 /
FBH71300v1



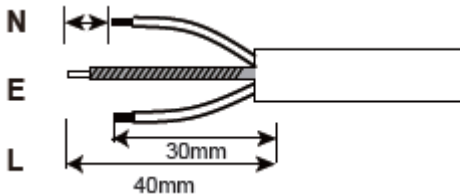
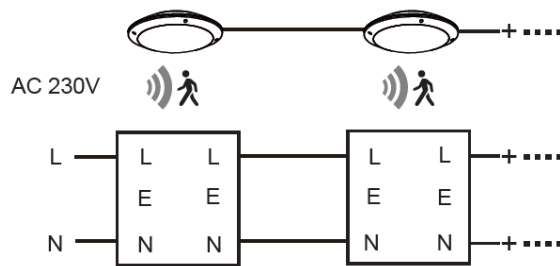
FBH71400v0 /
FBH71400v1

WIRING DIAGRAM

Single wiring



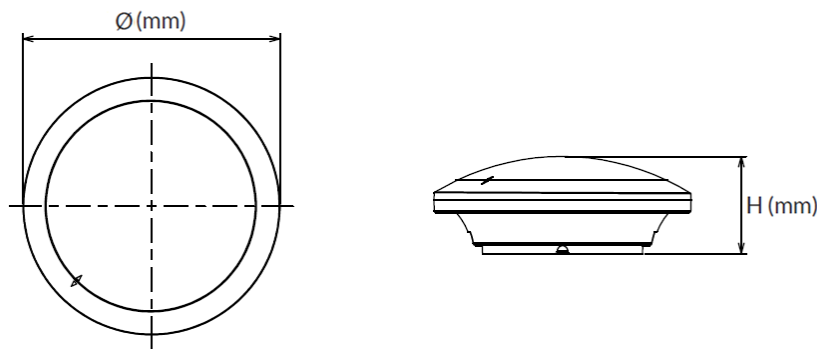
Loop-through wiring



Model No.	Inrush Current A	Inrush Duration µs	Max. no. of Luminaire Connection on MCB			
			B10	B16	C10	C16
FBH71300v0	7	27.6	80	127	132	216
FBH71300v0-ms	7	27.6	80	127	132	216
FBH71300v1	7.5	24	75	119	123	201
FBH71300v1-ms	7.5	24	75	119	123	201
FBH71400v0	7.88	22.4	71	113	117	192
FBH71400v0-ms	7.88	22.4	71	113	117	192
FBH71400v1	7.96	21.6	70	112	116	190
FBH71400v1-ms	7.96	21.6	70	112	116	190

DIMENSIONS & WEIGHT

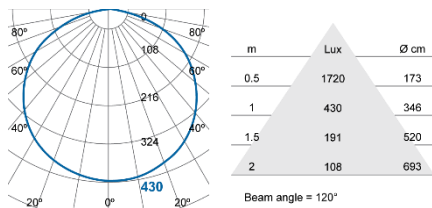
Model No.	Ø mm	H mm	Weight g
FBH71300v0	250	95	600
FBH71300v0-ms	250	95	650
FBH71300v1	250	95	600
FBH71300v1-ms	250	95	650
FBH71400v0	300	100	800
FBH71400v0-ms	300	100	850
FBH71400v1	300	100	850
FBH71400v1-ms	300	100	850



PHOTOMETRIC DIAGRAM

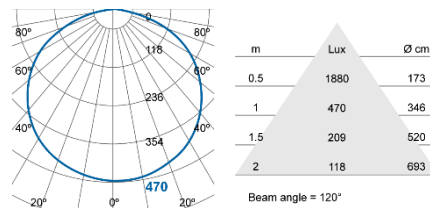
FBH71300v0

FBH71300v0-ms



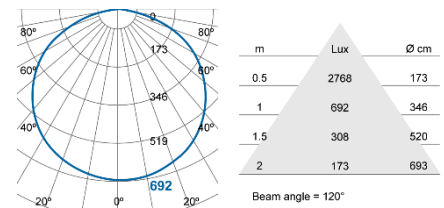
FBH71300v1

FBH71300v1-ms



FBH71400v0

FBH71400v0-ms



FBH71400v1

FBH71400v1-ms

