

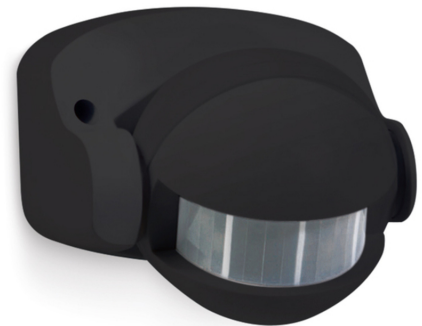
LEV68003BLK

PIR

PIR Unit IP44 1000W Black

Features & Benefits

- Manual override feature
- Compatible with LED and halogen
- Can switch up to 500W of LED and 1000W resistive
- Available in two finishes



WARRANTY



RATING



CLASS I

General Information

Product Group

Product Range

Mounting

Product Weight

Color Finish

Overall Dimensions

Method Of Fix

IP Rating

Environment

Warranty

Sensor

PIR

Surface Mounted

0.17kg

Black

92 x 84 x 76mm

Screw fix

IP44

Outdoor

2 year standard warranty (See Website for terms and conditions)

Electrical

Voltage Rating

220-240

Operating Frequency Hz

50/60Hz

Luminaire Circuit Wattage

1000W Halogen, 500W LED, 300W CFL

Controls and Sensors

Detection Distance

1-12M

Installation Height

2.5M Min

Occupancy Sensor Mode of Operation

Vacancy (Default) or Auto On

Control

PIR

Construction

Primary Material

Polycarbonate

Packaging

Product Packaged Weight

0.37kg

Quantity Per Outer Carton

24

Product Bar Code EAN-13 Number

505254409736

Standards & Approvals

Manufactured In Accordance To

BS EN 60598-2-1

CE Marked

yes

UKCA Marked

Yes

Certificate Of Conformity

yes, available on request

Accredited Members

LIA, ISO9001:2015, ISO14001:2015

