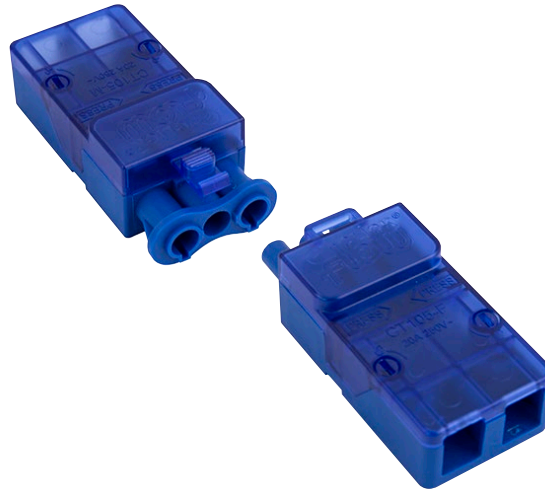


Product Code: CT105C

Description: 250V~ 20A 3 Pole Complete Push Fit Connector



General Information

CT105F Dimensions (mm) 79 (W) x 36 (D) x 23 (H)

CT105M Dimensions (mm) 79 (W) x 36 (D) x 24 (H)

Minimum Aperture Diameter (mm) 40

Finish Blue

Materials Cover: Polycarbonate
Terminals: Silver Plated Brass

Rated Voltage (V~) (Ue) 250

Resistive Load Rating (A) 20

Rated Impulse Voltage (kV) 4

Recommended Inner Core Strip Length (mm) L & N: 30; E: 38

Recommended Conductor Strip Length (mm) 12

Termination Type Push Fit

Terminal Capacity - Solid (mm²) 2.5 (Max.)

Terminal Capacity - Flex (mm²) 2.5 (Max.)

Termination Layout (Male) (CT105M) N - E - L

Termination Layout (Female) (CT105F) L - E - N

Cable Entry (Male Left Entry) CT105M - 2 x 2.5mm² Max.

Cable Entry (Male Right Entry) CT105M - 3 x 2.5mm² Max.

Cable Entry (Female) CT105F - 3 x 2.5mm² Max.

Cable Restraint Supplied Yes

Ingress Protection IP20

Operational Temperature (°C) -5 to +40

Warranty (Years) 10

Base & Terminal Housing: Nylon (PA66)

Contact Spring: Stainless Steel

Frequency (Hz) 50

Additional Information

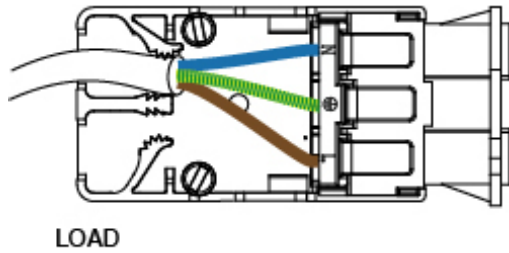
For cleaning / polishing of products, use only a soft, dry, clean cloth.
Ensure that the mains supply is isolated before commencing installation.
Always refer to the circuit diagram supplied with the relevant product.
Bare earth cables must always be covered with appropriate sleeving and wired to the earth terminal.
Any dangerous compatibility between different manufactures installation coupler systems is not automatically prevented by compliance with IEC 61535.

Product Code: CT105C

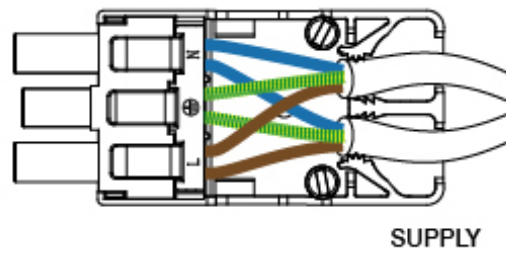
Description: 250V~ 20A 3 Pole Complete Push Fit Connector

Wiring Example

MALE - CT105M



FEMALE - CT105F



UK Design Registration: 3015621