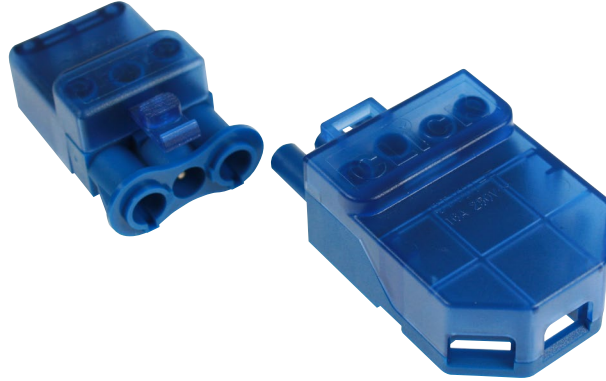


Product Code: CT101C

Description: 250V~ 20A 3 Pole Complete Connector



General Information

| | | |
|--|--|--|
| CT100F Dimensions (mm) | 68 (W) x 40 (D) x 22 (H) | |
| CT101M Dimensions (mm) | 52 (W) x 30 (D) x 22 (H) | |
| Minimum Aperture Diameter (mm) | 46 | |
| Finish | Blue | |
| Materials | Cover: Polycarbonate | Base & Terminal Housing: Nylon (PA66) |
| | Terminals: Silver Plated Brass | Terminal Screws: Steel and Yellow Passivated |
| Rated Voltage (V~) (Ue) | 250 | Frequency (Hz) 50 |
| Resistive Load Rating (A) | 20 | |
| Rated Impulse Voltage (kV) | 4 | |
| Recommended Inner Core Strip Length (mm) | Male: L&N: 20; E: 28; Female: L&N: 35; E: 43 | |
| Recommended Conductor Strip Length (mm) | 10 | |
| Termination Type | Screw | |
| Terminal Size (mm) | Ø4.2 | Terminal Torque Value (Nm) 0.8 |
| Terminal Capacity - Solid (mm ²) | 3 x 2.5 | |
| Terminal Capacity - Flex (mm ²) | 3 x 1.5 | |
| Termination Layout (Male) | (CT101M) N - E - L | |
| Termination Layout (Female) | (CT100F) L - E - N - Loop | |
| Cable Restraint Supplied | On Male Only | |
| Ingress Protection | IP20 | |
| Operational Temperature (°C) | -5 to +40 | |
| Warranty (Years) | 10 | |

Additional Information

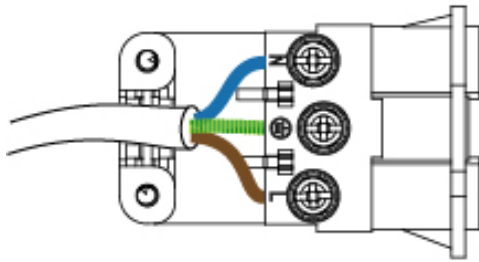
For cleaning / polishing of products, use only a soft, dry, clean cloth. Ensure that the mains supply is isolated before commencing installation. Always refer to the circuit diagram supplied with the relevant product. Bare earth cables must always be covered with appropriate sleeving and wired to the earth terminal. Pre-fabricating wiring systems manufactured to BS 8488 by other manufacturers may not be compatible or safely inter-connectable with this system. Any dangerous compatibility between different manufactures installation coupler systems is not automatically prevented by compliance with IEC 61535.

Product Code: CT101C

Description: 250V~ 20A 3 Pole Complete Connector

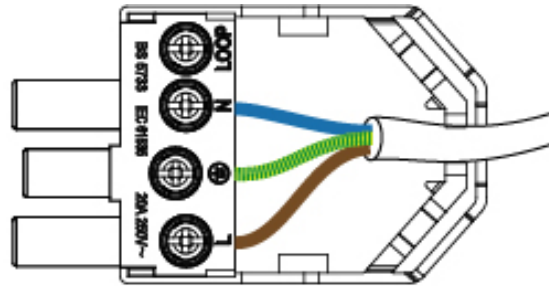
Wiring Example

MALE - CT101M



LOAD

FEMALE - CT100F



SUPPLY

UK Design Registration: 3015621